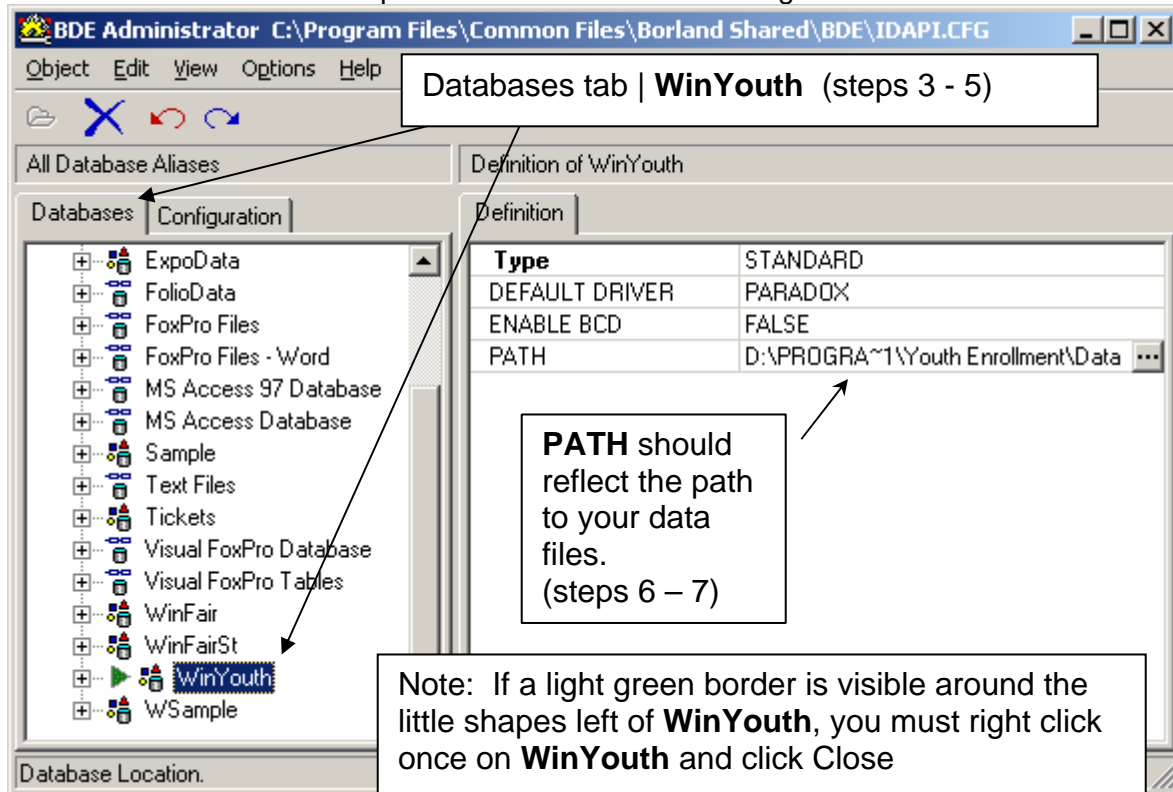


# BDE Guide

These are the steps that you would follow in order to allow **Youth Enrollment** to show you a set of Data files:

1. Close **Youth Enrollment**
2. Click the Start button, Choose Programs | **Youth Enrollment** | BDE Administrator

The BDE Administrator will open and look similar to the image below.



3. Click on the Databases tab
4. If the list is not expanded, click once on the plus sign next to the word Databases
5. Carefully, click once on the word **WinYouth**. The Definition will fill in on the left side of the screen.
6. Click once on the PATH shown. A little button will appear with 3 dots in it. Click on that button. A screen appears to let you change the PATH.
7. Choose your new path. Close the browse window. Close out of the BDE Admin.
8. Make sure you Save the change you made when the message appears on closing. You do not have to shut down your computer. If you didn't close **Youth Enrollment** as in step 1, then you would need to close **Youth Enrollment** and open it again in order for the changes to take place.

If you have questions, please contact MarTech Systems, Inc. Support Staff at (715) 845-2794 or email [sandya@martechsys.com](mailto:sandya@martechsys.com). Please use "BDE path Youth" in the subject line.

# BDE Guide

Sharing Data and making sure everyone can log in at the same time...

Configuration tab | System | INIT

Property	Value
AUTO ODBC	FALSE
DATA REPOSITORY	Sample Data Dictionary
DEFAULT DRIVER	PARADOX
LANGDRIVER	'ascii' ANSI
LOCAL SHARE	FALSE
LOW MEMORY USAGE LIMIT	32
MAXBUFSIZE	2048
MAXFILEHANDLES	48
MEMSIZE	16
MINBUFSIZE	128
MTS POOLING	FALSE
SHAREDMEMLOCATION	
SHAREDMEMSIZE	2048
SQLQRYMODE	
SYSFLAGS	0
<b>VERSION</b>	4.0

LOCAL SHARE should show FALSE

NET DIR must be at least one level up from the data folder. If you're your data in F:\Youth\Data, then NET DIR should be F:\Youth, or F:\. If you don't have read/write permission in the NET DIR, you won't be able to open the software.

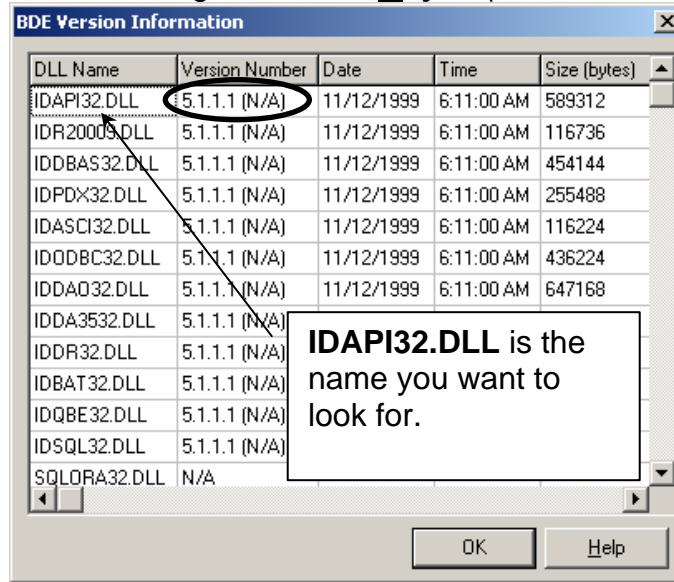
Property	Value
NET DIR	0:\
<b>VERSION</b>	4.0
<b>TYPE</b>	FILE
LANGDRIVER	'ascii' ANSI
BLOCK SIZE	2048
FILL FACTOR	95
LEVEL	7
STRICTINTEGRITY	TRUE

LEVEL should be level 7 at a minimum

# BDE Guide

If you question the version of the BDE, check the following:

- While still on the Configuration tab, **Object** | Version Information ...



See if the Version Number matches for IDAPI32.DLL.

If you have questions, please contact MarTech Systems, Inc. Support Staff at (715) 845-2794 or email [sandya@martechsys.com](mailto:sandya@martechsys.com). Please use "BDE help Youth" in the subject line.