

The Salsa Apron

For more information on this material please contact:
Miriam Force
4-H Staff Assistant
Washing County

Pieced Apron/ Makes two aprons

Designed by Miriam Force

WST = wrong sides together RST = right sides together RSO = right sides out

Fabric Requirements:

- ♥ ½ yard of four matching fabrics or 8 fat quarters
- ♥ 1 ½ yard for the two backs

Construction:

1. From each of four fabrics cut
 - ♥ 13 X 13 (for apron panels)
 - ♥ 7 X 11 (for pocket)
 - ♥ 1 ½ X 20 (for accent strip)
 - ♥ two from each fabric 2 X 20 for apron tie)

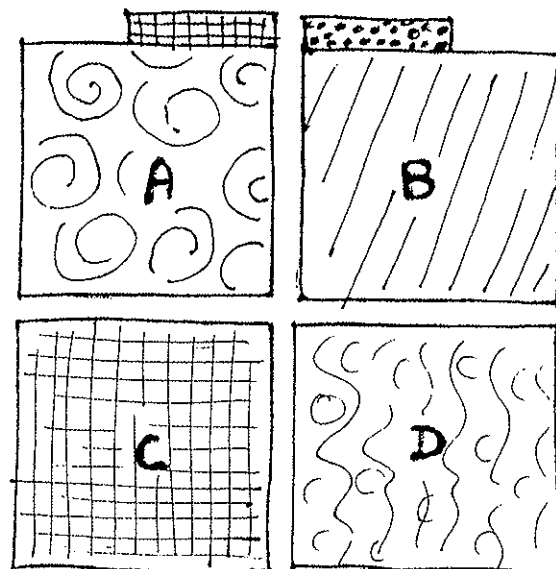
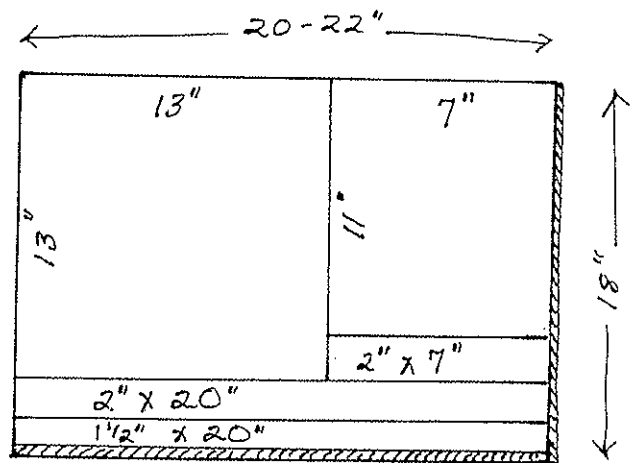
From two of the fabrics cut

- ♥ 2 X 7 (for top of apron)

From one of the fabrics cut apron back

2. Choose four different 13 X 13 squares for each apron, and four 7 X 11 rectangles and two 2 X 7 rectangles for each apron.
 - ♥ For each apron, lay out the 13 X 13 squares in a four-by-four arrangement. Don't sew yet! Refer to the four squares as A, B, C, & D as shown

- ♥ Sew a 2 X 7 rectangle
To the top inside edge of
The A and B squares as
Shown.



3. To prepare pockets for each side, fold the four 7 X 11 rectangles in half RST.

♥ On two of these, sew only along one short edge:

Turn RSO and press.

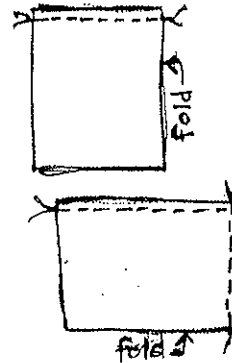
(use these on the A & B squares)

♥ On the other two, sew along one short edge

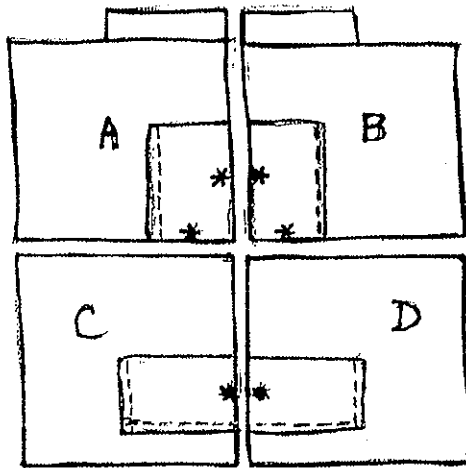
And along the long edge:

Turn RSO and press.

(use these on the C & D squares)



Pin the pockets on the 13 squares as shown below.



• Indicates where raw edges are Placed even with raw edges.

On the A & B pockets stitch only Along the long edge as shown.

Place the C & D pockets 3" from Bottom of squares and stitch along Short side and along the bottom edge.

4. Add accent strips:

♥ Fold the 1 ½ accent strips in half lengthwise, WST.

♥ Place a folded accent strip along the top edge of the C square with raw edges Even. Baste in place with a ¼ inch seam. Do the same with the D square

♥ Baste an accent strip along the right side edge of the C square, enclosing the side Of the pocket as you do.

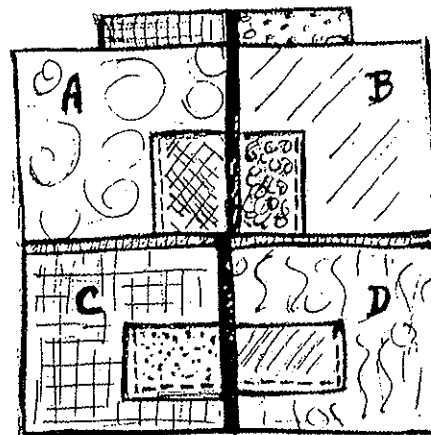
♥ Baste an accent strip along the left side of the B square, including the edge of the Small rectangle at the top and also catching the edge of the pocket.

5. Sew square A to Square B. Press the accent strip toward B and the seam allowance toward A. Sew square C to Square D. Press the accent strip toward C and the seam allowance toward D.

Sew the A-B section to the C-D section.

Press accent strips toward C-D and the

Seam allowance toward A-B



6. Use the "cut out" pattern provided to mark and cut a curve on the upper right and upper left of your apron.
7. Using your front apron as a pattern – cut out the back side of your apron. Place the front and back of the aprons sides RST.
8. Make four apron ties from the eight 2 X 20 strips cut in step 1. For each tie, sew two strips together leaving one end open. Turn and press.
9. Insert the unfinished ends of two of the ties into the sides of the apron. Pin in place. Insert the other two ties at the top of the apron and pin in place.
10. With the ties in place keep the two layers (front and back) RST and pin around the outside edges. Sew the two layers together around the outside edges with a $\frac{1}{2}$ inch seam – leaving A 4 inch opening on one side – see diagram below.
11. Turn apron RSO and press. Topstitch approximately $\frac{1}{2}$ in around the entire apron, enclosing the openings as you go.

